



MOLDGUARD

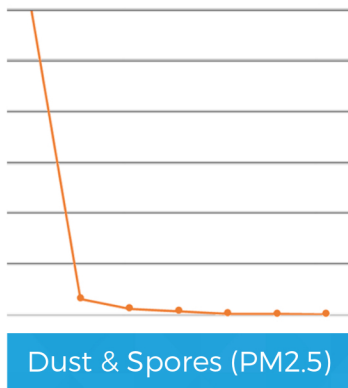
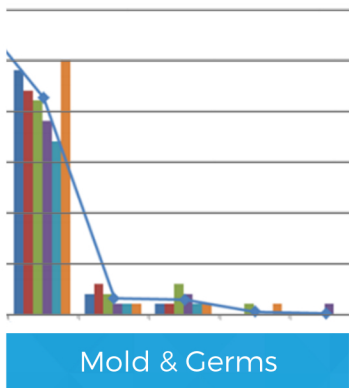
Owner's Manual

**Purify the
Indoor Air
and Protect
Surfaces**



For safety and to ensure proper use, carefully read the contents of this manual before operating or installing this product.

University Proven Benefits



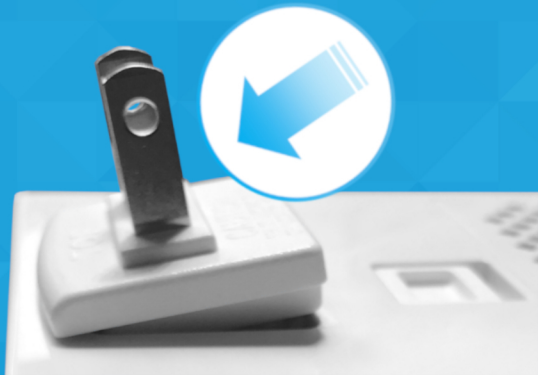
The Mold Guard is different. Unlike most other air purifiers Mold Guard actively purifies the air and surfaces 24 hours a day. Years of university studies, laboratory tests, and commercial successes have proven the efficacy of our technologies.

Request full studies and find additional air quality solutions at: www.hypoair.com

Insert Country Specific Plug

Step 1:

Insert "Top" side of plug



Step 2:

Push down on plug firmly



Need to uninstall? Push down clip to remove

Insert into wall outlet

Install facing
upwards or
downwards.

Upwards is slightly
better for air quality.



Important Safety Instructions

When operating electrical appliances, basic precautions should always be followed. **WARNING** To reduce the risk of fire, electric shock or injury:

- Do not use outdoors or on wet surfaces.
- Use only as described in this manual.
- Do not use with damaged unit or damaged outlet.
- Do not handle with wet hands.
- Do not put any object into openings while plugged in.

Register Your Warranty

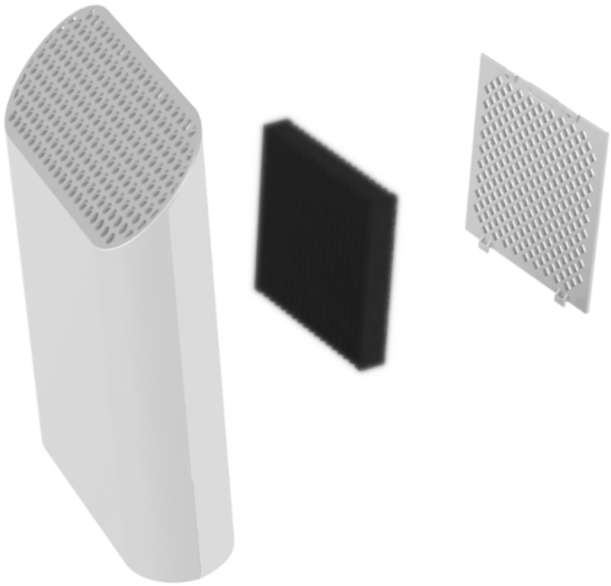
www.hypoair.com/warranty

For more information about this amazing technology, troubleshooting tips, returns, reorders, and any other customer service please visit us online. To disable the night light please contact us for instructions.

Find the latest version of this manual:
www.hypoair.com/mg-100

Contact us for help: info@hypoair.com

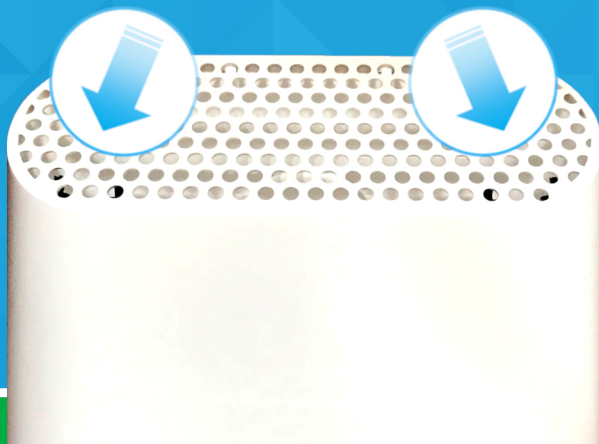
Washing your Filter



Your washable filter needs a quick rinse in water at least once a month to keep your Mold Guard running smoothly and quietly. Let filter completely dry before reinstalling.

Cleaning the ion generators

In some high contaminant situations the polar ion generator heads will become clogged with debris. This can result in a slight electrical popping noise as the ions are created. There are two high powered polar ion heads on each side of the unit under the top mesh grille. To clean, simply **unplug** the unit from the wall and blow air into the top to clean the ion generator heads. A bottle brush can also be used.



Optional HEPA & Carbon Filters

Activated Carbon Filters **can** be used for additional odor control. If you purchased some of these they should be replaced every 1-3 months of use or as needed.

Carbon filters are highly effective at absorbing chemicals & odors.

www.hypoair.com/Carbon



Hypoallergenic Air® technologies now sanitize an estimated 2 billion cubic feet of air every hour. Over the last 15 years we have become the trusted solution for clients like hospitals, universities, professional sports teams, aerospace groups, famous resorts, the world's tallest building, and tens of thousands of homes.

Learn more at

www.hypoair.com



Designed
& Printed
in the USA