

HYPOAIR®

Whole Home BP-2400 Air Purifier

Owner's Manual



For use with models: BP2400-24, BP2400-110-220,
EPA Establishment number: 92866-TX-1



For safety and to ensure proper use carefully read the contents of this manual before operating or installing the unit.

R2021.02.10

Thank You for Choosing The Bi-Polar® 2400

Congratulations, you own the MOST Versatile HVAC Air Purifier available! Before operating the Bi-Polar® 2400 please read this manual in its entirety. Doing so will give you important information to keep you safe from harm and ensure you get the most benefits from your air purifier. For additional information please contact us:

www.HypoAir.com
support@hypoair.com
(949) 791-9404

Hypoallergenic Air LLC
P.O. Box 9901
Fountain Valley, CA 92728

For returns & warranty claims, complete this form first: www.HypoAir.com/RMA

Table of Contents

Important Safety Instructions	1
Maintenance & Installation	2
Mounting & Installation Instructions	3 - 8
Limited Warranty	9
Troubleshooting Guide & Product Specs.....	back cover



Important Safety Instructions

When operating any electrical appliance, basic precautions should always be followed for safety.



RISK OF FIRE, ELECTRIC SHOCK, OR INJURY

- Carefully read the entire contents of this manual.
- Do not use outdoors.
- Do not use the unit in areas of extreme heat or in the presence of flammable gas.
- Do not attempt to service or repair the unit yourself. Any attempt to repair the unit yourself could cause serious injury and will void the warranty.
- Do not handle the wires or appliance with wet hands.
- Do not use damaged or uninsulated wires. If appliance is not working properly call a customer service representative at 1-800-936-1764.

WARNING: RISK OF ELECTRICAL SHOCK. CAN CAUSE INJURY OR DEATH. DISCONNECT UNIT FROM POWER SUPPLY BEFORE SERVICING.



Store and transport -4° F ~ 180° F, humidity 10% ~ 90% (Non Condensing).



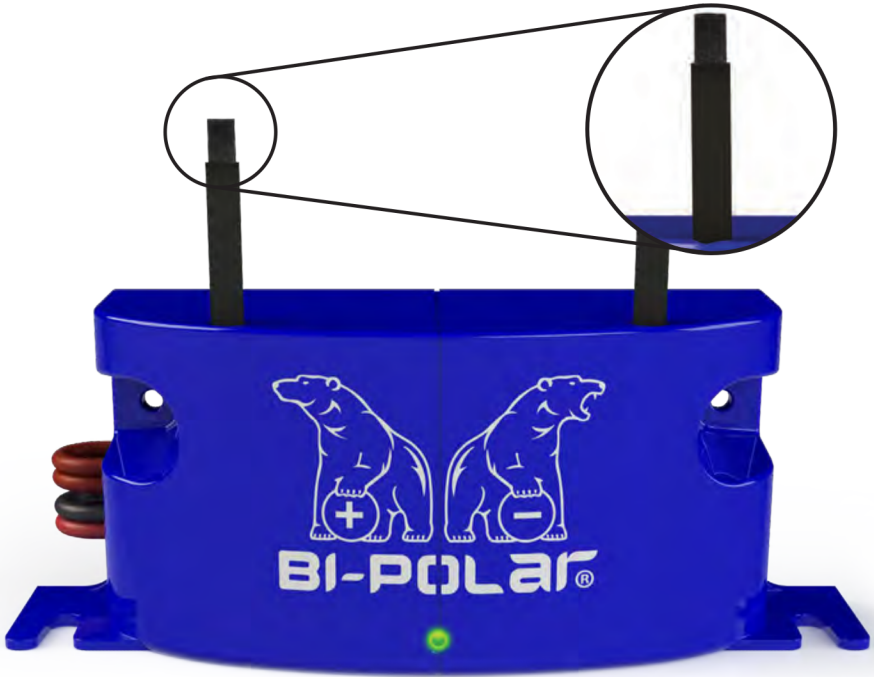
Do not operate unit in ambient temperatures above 150° F.



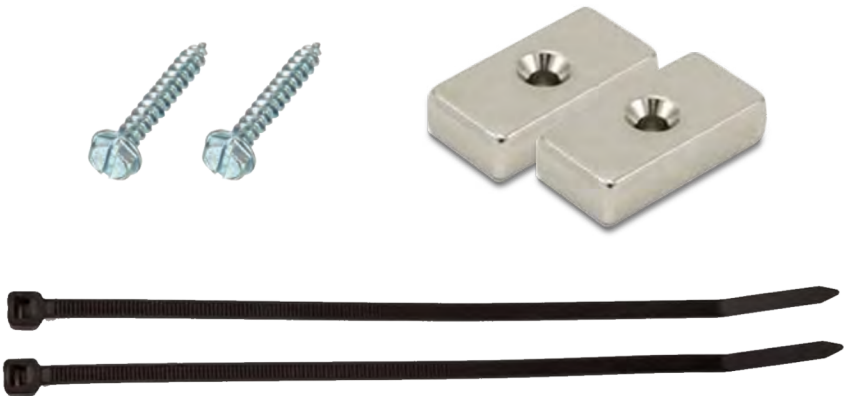
KEEP OUT OF REACH OF CHILDREN

Maintenance & Installation

The Bi-Polar® 2400 was engineered to have low maintenance. The brush heads on your unit should be cleaned periodically for optimal effectiveness.



The Bi-Polar® 2400 can be installed using included screws, zip ties, or neodymium Magnets as shown below.



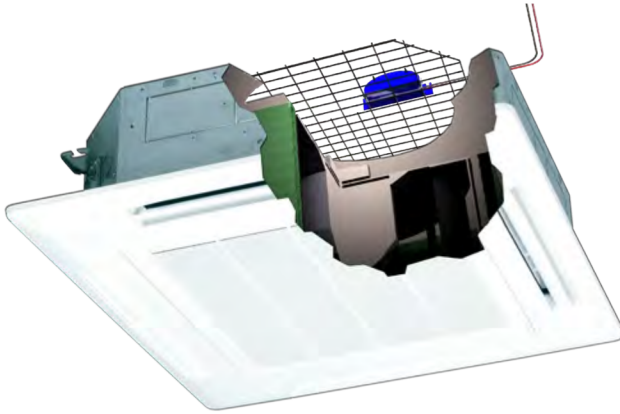
If not connecting to a BAS system, then you may cap off the brown BMS wires.

Optimal Mounting Locations

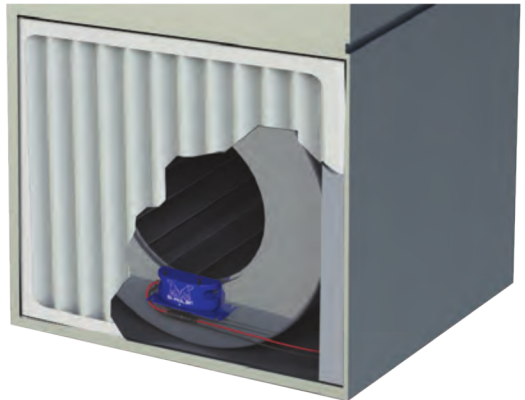
Ptac
Installation



Ceiling Mount
Installation



Furnace
Installation




Installation Instructions

Preparing to Install Your New Bi-Polar® 2400 unit

The Bi-Polar® was designed to be simple and effective. Remove the unit & mounting hardware (two self tapping screws) from the box. We recommend keeping the box and all packaging material for shipping the unit, should it ever need to be returned for repairs. Locate the ideal location within the air stream. We recommend after a prefilter but before the cooling coil. Alternately, it can be mounted in the supply air.

Caution

 Installation and servicing of air-conditioning equipment can be hazardous due to system pressure and electrical components. Only trained and qualified service personnel should install, repair, or service air-conditioning equipment.

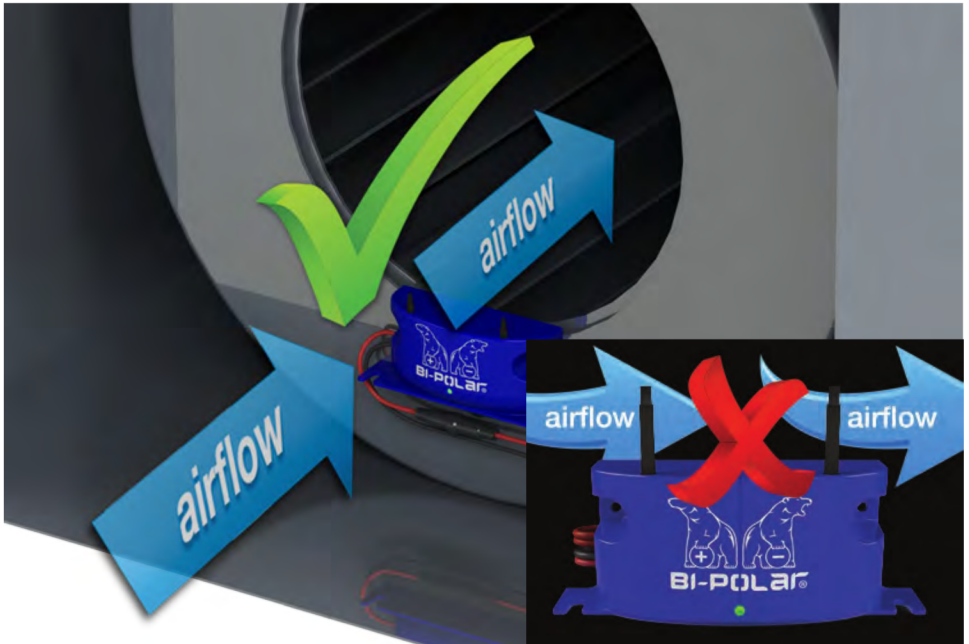
Air Oasis and its affiliates are not responsible for any damage to the Bi-Polar® unit, or injury to yourself or others, if you elect to install the device without utilizing qualified technicians.

Use the suggestions on page 3 to determine the optimal mounting location(s).

To complete the installation process you will need the following tools:

- 1/4 inch hex head screw driver

Should be installed with brushes a minimum of 2 to 3 inches away from any metal objects or high voltage wires. Install the Bi-Polar® where the air can easily flow through the brushes. (Please see image below)



Installation Instructions

Wiring Instructions

1. The Bi-Polar 2400 contains an in-line fuse; other external or in-line fuses are not required. Check with your local electric codes and follow all guidelines.
2. Review the model number found on the Bi-Polar 2400 product and wire it only to the voltage range shown below. Disconnect power to the air handler the Bi-Polar 2400 will be mounted to during installation.
3. If connecting to a 24VAC power source with a grounded transformer leg, connect the grounded leg to the black wire.
4. Unit can be powered 24/7 or it may be interlocked to cycle with blower.
5. Green light will illuminate when powered and operating correctly.

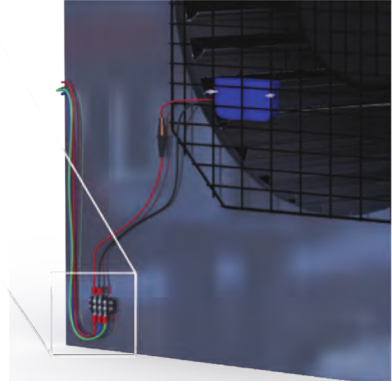
Black wire: Neutral or Ground

Red wire: Positive Input

2 Models:

BP2400-24 Usage 24 VAC / 400mA

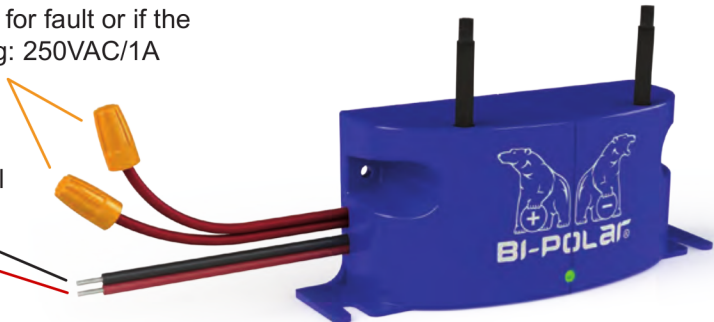
BP2400-110-220 Usage 110-277 VAC / 80mA / 40mA



Connecting Bi-Polar to a BMS System

Contacts are closed when on.
Contacts are open for fault or if the power is off. Rating: 250VAC/1A

Black = AC Neutral
or ground
Red = AC+



If not connecting to a BAS system, then you may cap off the brown BMS wires.

Installation Instructions

Furnace Installation

Step 1 - Confirm power is disconnected from AHU and remove face panel, exposing fan compartment.

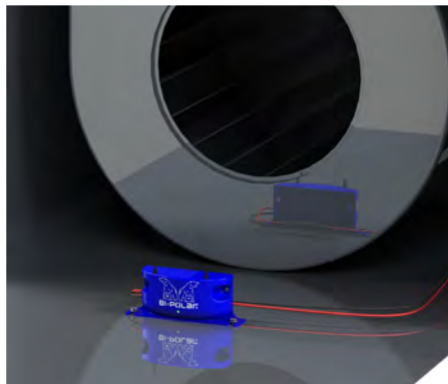
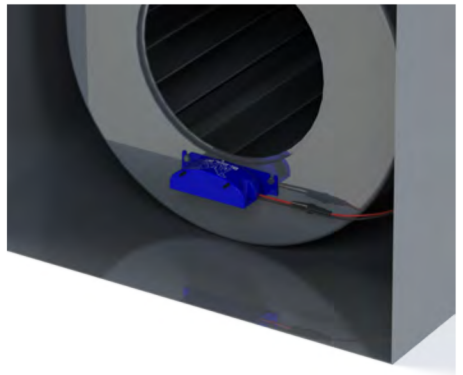
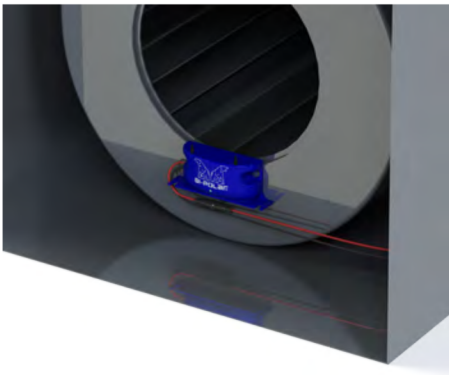
Step 2 - Locate power distribution block where main power is or will be connected to unit.

Step 3 - Using the included self-tapping screws, attach the Bi-Polar 2400 as shown in the illustration below.

Step 4 - Wire the Bi-Polar 2400 to the power distribution block. The wires are not polarity sensitive and may be shortened as required. Make sure to use the proper Bi-Polar model based on the primary voltage.

Step 5 - Enjoy the many benefits of the Bi-Polar 2400!

Multiple Mounting Options (Please see examples below)



If not connecting to a BAS system, then you may cap off the brown BMS wires.

Installation Instructions

Ptac Installation

Step 1 - Disconnect power to air conditioner, remove service access panels and locate fan compartment. Using either the included self-tapping screws, zip ties, or clear adhesive strips, mount the Bi-Polar 2400 within the airstream as illustrated below.

Step 2 - Wire the Bi-Polar's black and red wires to the proper voltage terminals on the power distribution block as illustrated on page 3. The wires are not polarity sensitive and may be shortened as required. Make sure to use the proper Bi-Polar model based on the primary voltage.

Step 3 - Enjoy the many benefits of the Bi-Polar 2400!



If not connecting to a BAS system, then you may cap off the brown BMS wires.

Installation Instructions

Ceiling Mount

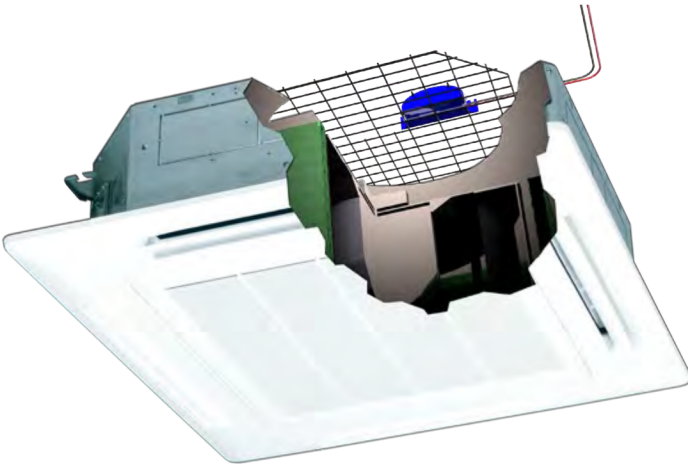
Step 1 - Confirm power is disconnected from the air conditioner and remove face panel, exposing fan compartment.

Step 2 - Locate power distribution block where main power is or will be connected to unit.

Step 3 - Lift up a portion of the protective wire screen and zip tie the Bi-Polar to the fan side of the screen.

Step 4 - Wire Bi-Polar to the power distribution block as illustrated on page 3. The wires are not polarity sensitive and may be shortened as required. Make sure to use the proper Bi-Polar model based on the primary voltage.

Step 5 - Enjoy the many benefits of the Bi-Polar 2400!





To view our warranty information, terms and conditions
and privacy policy, go to:

www.HypoAir.com/Warranty

Troubleshooting Guide

Problem/Question	Solution/Answer
What if my Bi-Polar 2400 won't turn on? The indicator light is not illuminated.	Check to make sure the Bi-Polar is properly installed with the black and red wires securely connected to the power source.
How do I know my Bi-Polar 2400 is working?	First check to see that the green indicator light is illuminated. A voltage detector can be placed between the brushes. If a voltage is detected then the unit is working properly.
How do I clean debris off the brush heads?	Using any non abrasive object, lightly brush the heads to remove debris.
<p>If the above does not repair the symptom please contact HypoAir Customer Service</p> <p>support@hypoair.com www.hypoair.com/contact-us (949) 791-9404</p> <p>For any warranty claims, exchanges or 30 day returns, you must first fill out the RMA form found at the following link for instructions: www.HypoAir.com?RMA</p>	

Bi-Polar 2400 Specifications

Operational	BP2400-24 Coverage BP2400-110 Coverage BP2400-220 Coverage Ozone Warranty	Up to 2400 CFM Up to 2400 CFM Up to 2400 CFM 0 ppm Five (5) year limited warranty
Replacements	The Bi-Polar 2400 requires	no replacement parts.
Electrical	BP2400-24 Usage BP2400-110-220 Usage	24 VAC / 400mA 110-277 VAC / 80mA / 40mA
Mechanical	BP2400-24 Dimensions Weight of Unit Shipping Weight BP2400-110-220 Dimensions Weight of Unit Shipping Weight	5" W x 2" H x 1.5" D 0.25 lbs 2 lbs 5" W x 2" H x 1.5" D 0.25 lbs 2 lbs



Distributed by Hypoallergenic Air LLC
P.O. Box 9901 Fountain Valley, CA 92728, (949) 791-9404
USA Made with US Components in partnership with Air Oasis