



MOLDGUARD



Quick Start Guide

For safety and to ensure proper use, carefully read the contents of this manual before operating or installing this product.

Insert Country Specific Plug



Step 1:

Insert "Top" side of plug

Step 2:

Push down firmly

Need to uninstall? Push down clip to remove

1



2



Insert into wall outlet

Install facing upwards **or** downwards. Upwards is more ideal for air quality.



Visit moldguard.us/troubleshooting tips for loose fitting wall outlets

Important Safety Instructions

When operating electrical appliances, basic precautions should always be followed.

WARNING To reduce the risk of fire, electric shock or injury:

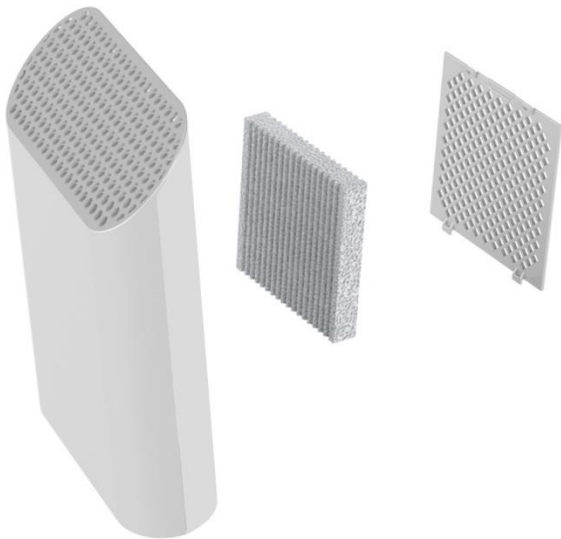
- Do not use outdoors or on wet surfaces.
- Use only as described in this manual.
- Do not use with damaged unit or damaged outlet.
- Do not handle with wet hands.
- Do not put any object into openings.

Need Additional Help?

For more information about this amazing technology, troubleshooting tips, returns, reorders, and any other customer service please visit us online at:

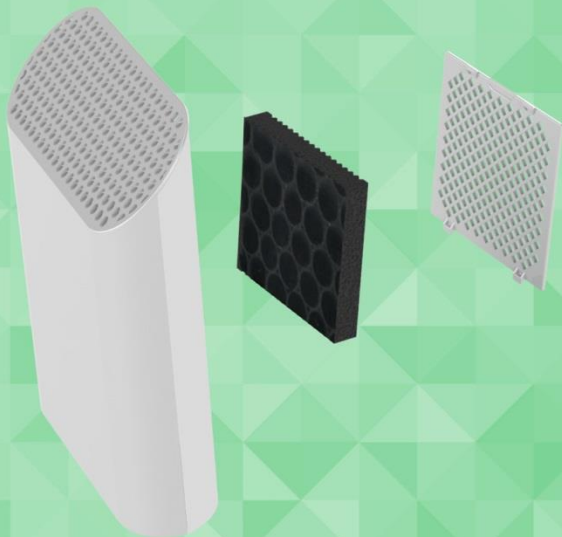
www.moldguard.us

Cleaning your Particulate Filter



Occasionally your pleated filter may benefit from a quick rinse under water depending on contamination. Simply pop the dust guard off the back, pull out the filter and wash it gently under a faucet.

Interchangeable Carbon Filter



An activated carbon filter can be effective against heavier odor issues. These typically last for 1 month at a time and **can be purchased online** at:
www.moldguard.us/carbon

Find Additional Solutions



Hypoallergenic Air's exclusive technologies now sanitize an estimated 1 billion cubic feet of air every hour.

Learn more at www.hypoair.com